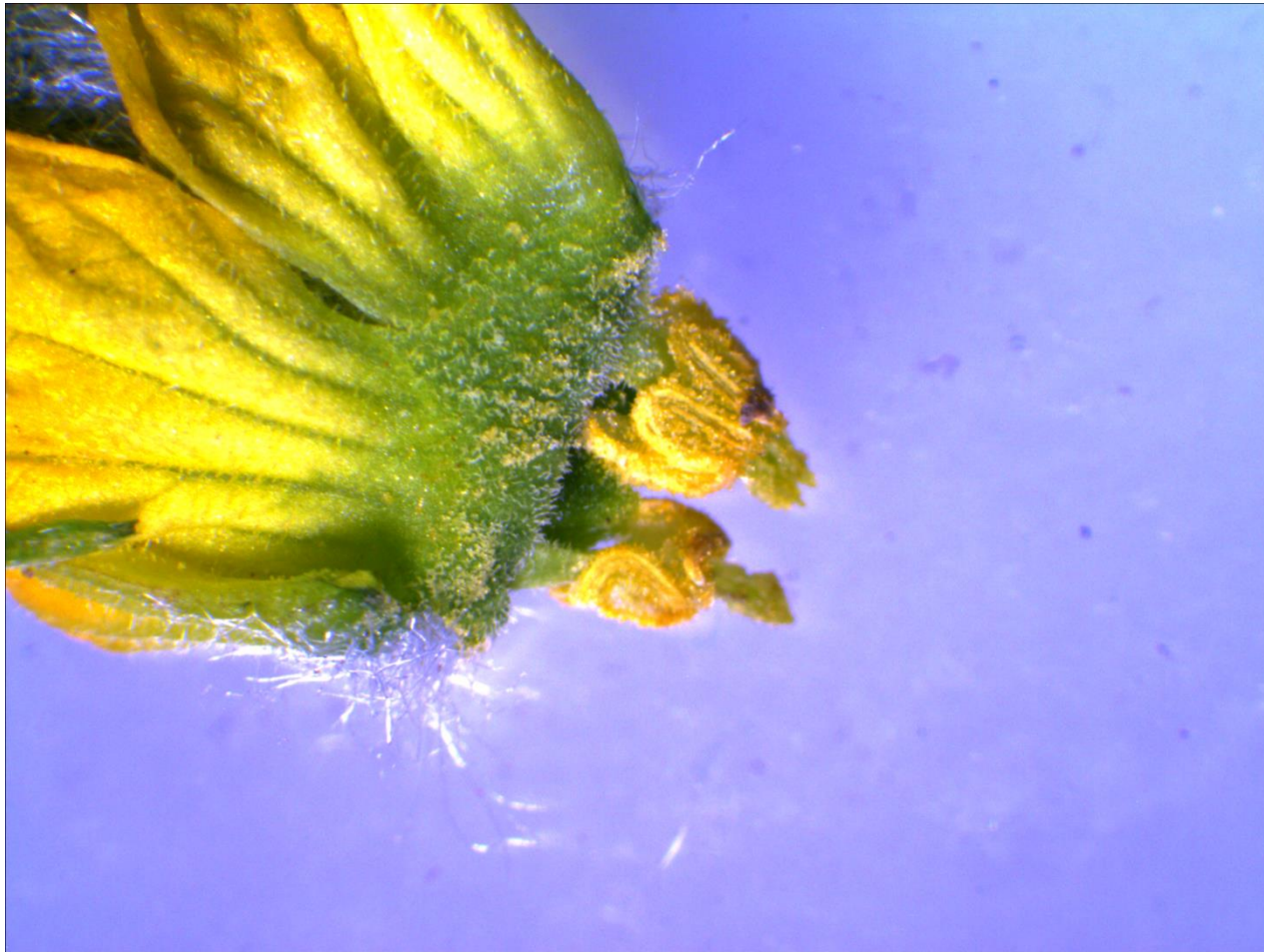


# Flores hembra de melón (*Cucumis melo*)

José Eladio Monge Pérez

Michelle Loría Coto

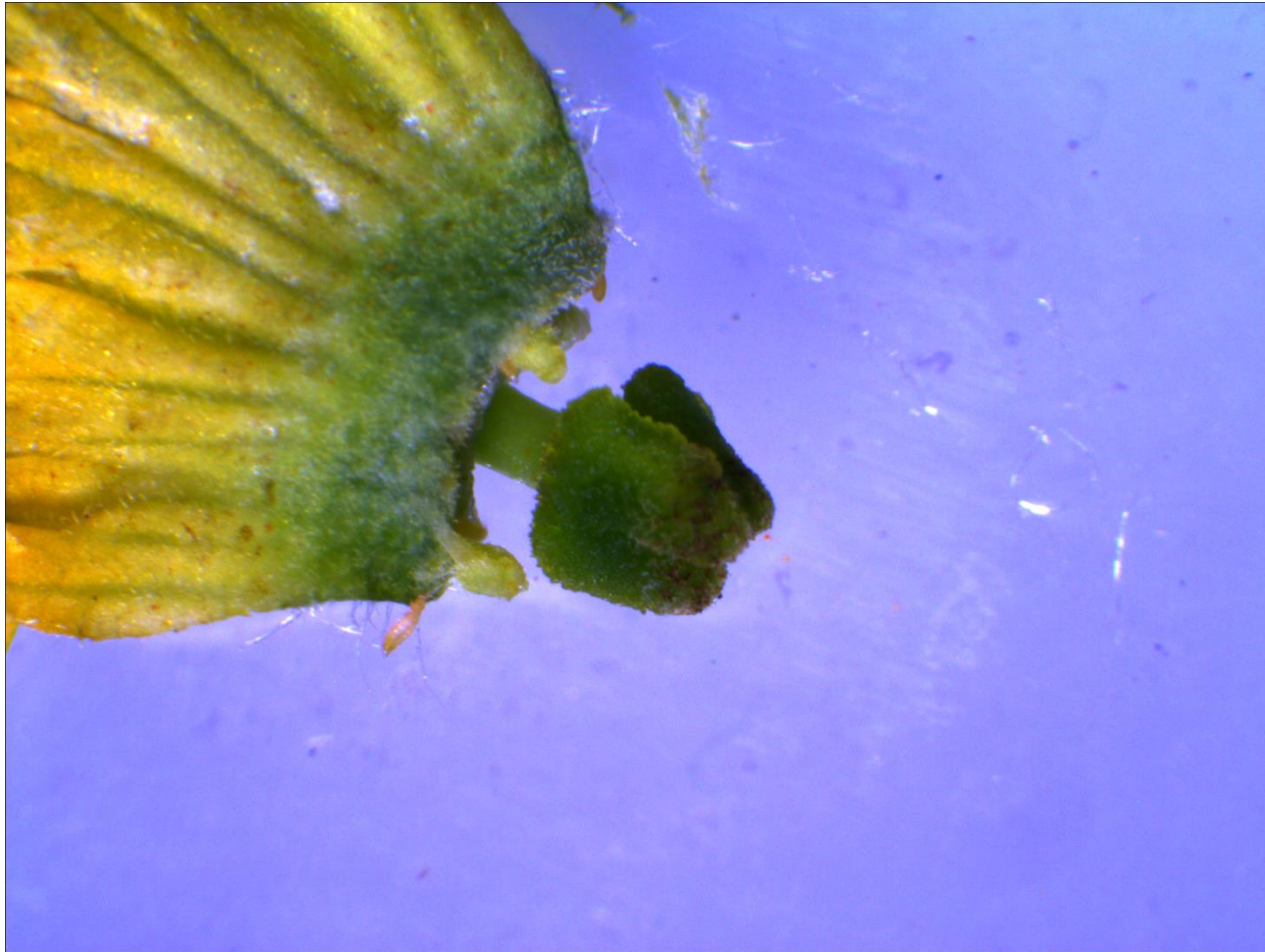
# Genotipo 123



# Genotipo 156

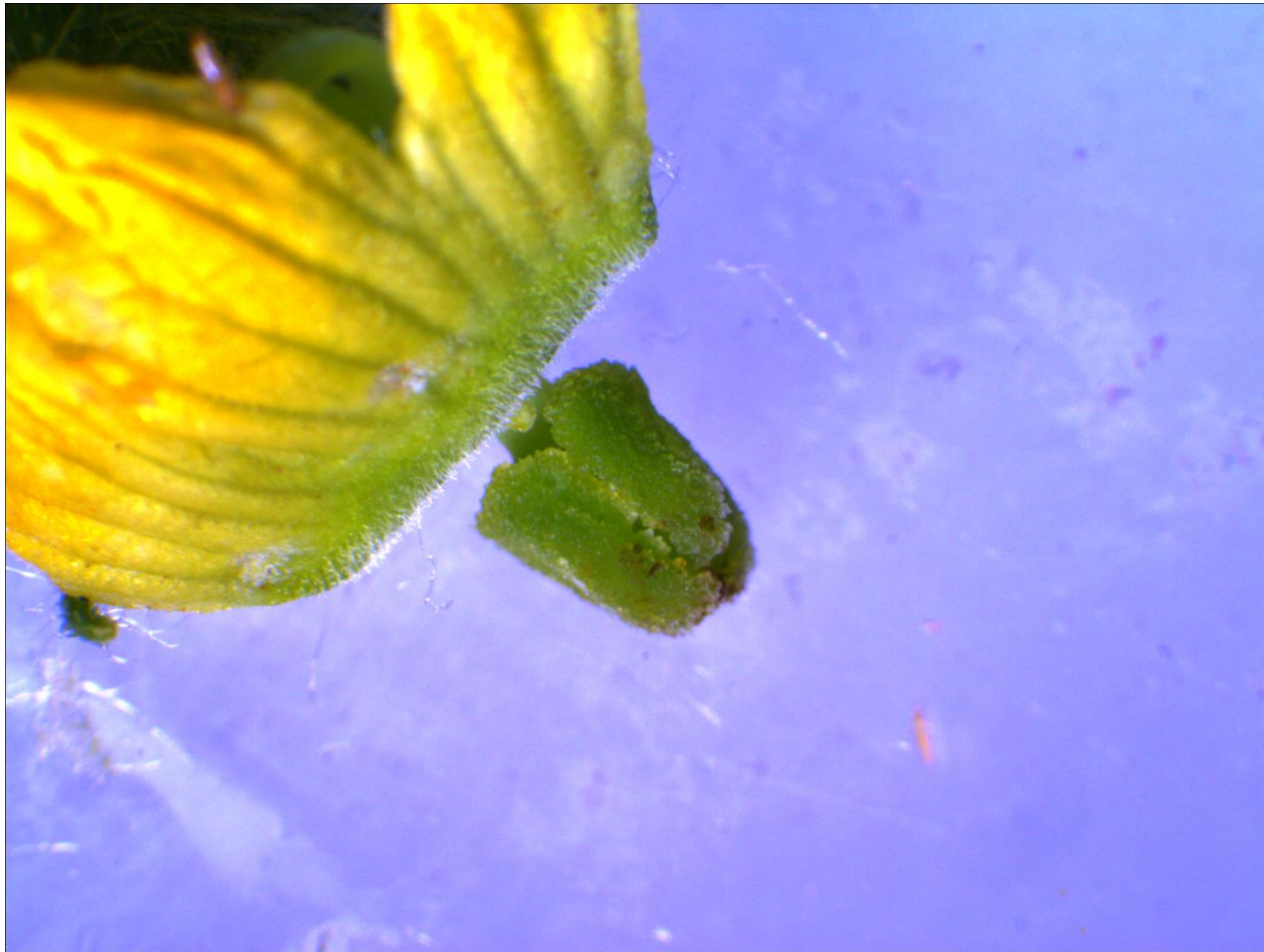


# Genotipo 151





# Genotipo 107



# Genotipo 101



# Genotipo 102





# Genotipo 103





# Genotipo 142



# Genotipo 147



# Genotipo 161

