



Open Table Philosophy: Establishment of the Integrated and End-of-Life Care Working Group in the Latin American Region

Authors: Sáenz-Madriral, Rocío; Collado Claudia; Pinto, Paula; Vacarezza, Cristóbal; Gómez Duarte, Ingrid; Sancho-Rojas, Wilmer; Quesada-Chaves, Jossel; López, Wendy; Solis, Luis Fernando

IFIC LatAm

Speaker: Wilmer Sancho

ificlatam@integratedcarefoundation.org



Background

Key Points

- A decisive step was taken in Latin America in April 2022 with the consolidation of the regional center known as IFIC LatAm
- Unlike the other IFIC centers, IFIC LatAm faces the complexity of integrating the participation of researchers from different countries in the region, making it a regional rather than a national center



Approach

1. Organizational structure

Goal of establishing an organizational structure that allows for the inclusion of integrated care topics relevant to the Latin American region

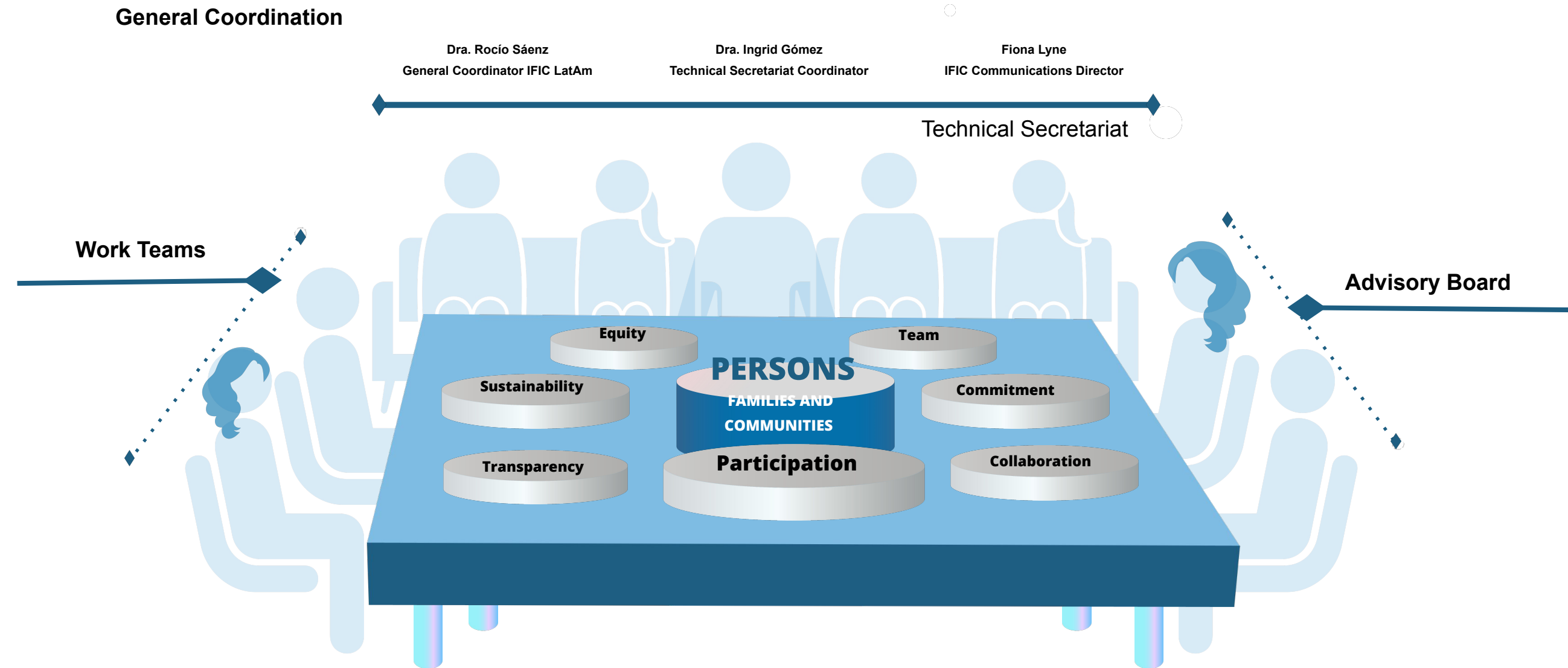
2. Creation

process

Over two years of continuous work, bringing together a diverse group of organizations and individuals

3. Figure of “working groups”

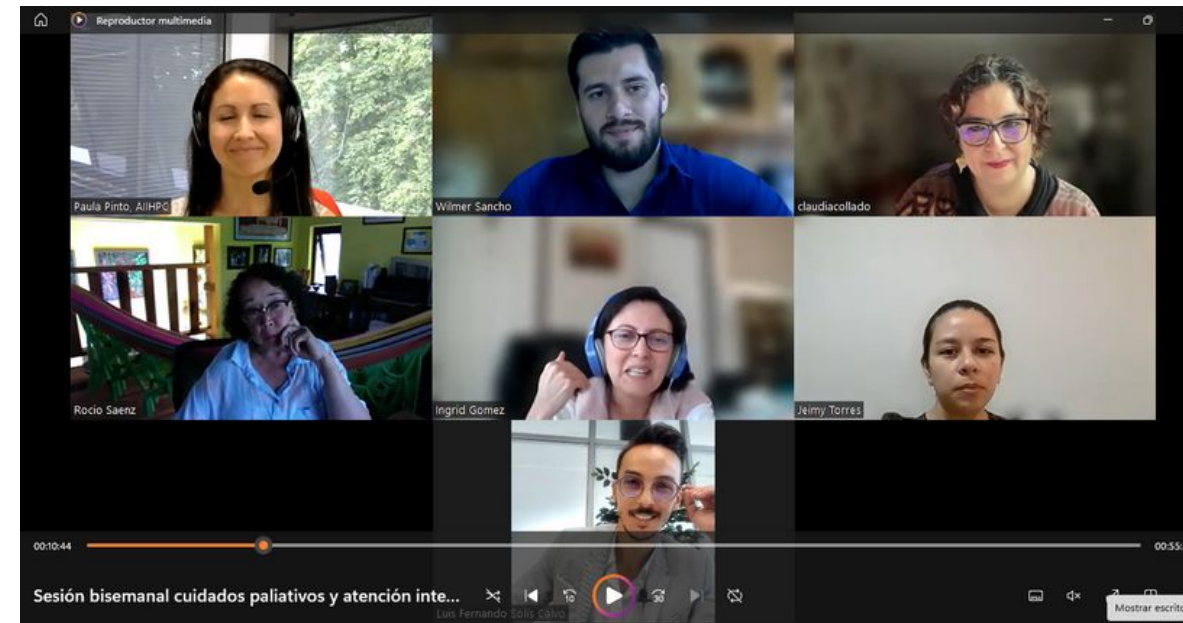
Support for professionals, work teams, or regional groups interested in generating and disseminating knowledge on integrated care in the region



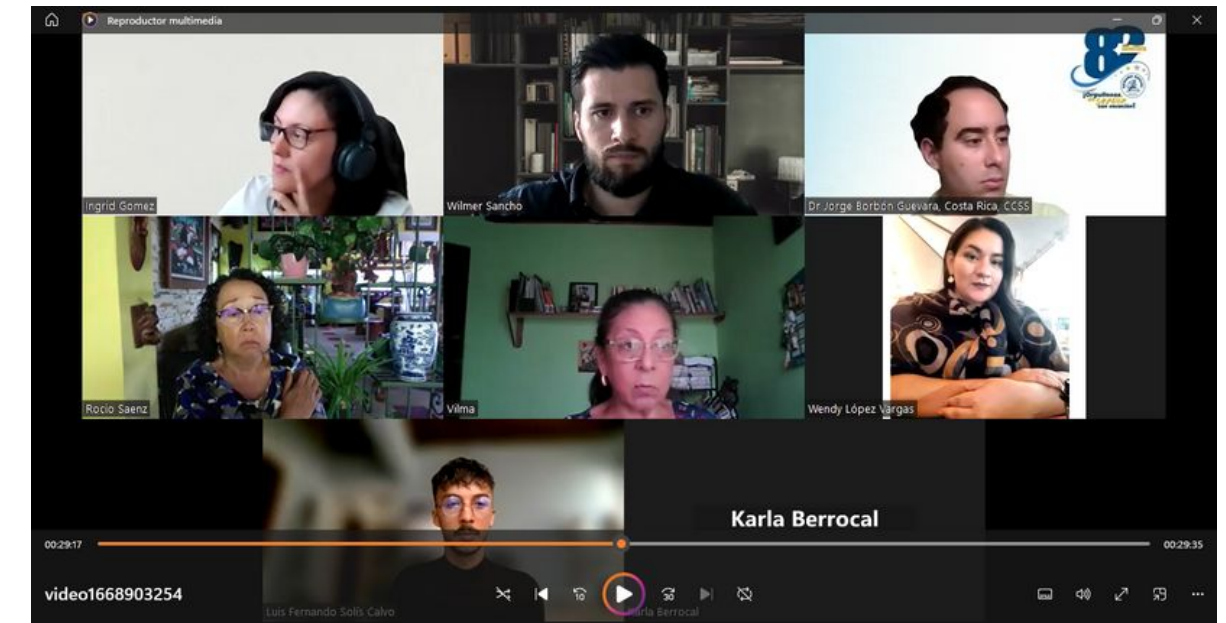
Results

- Consolidation of a Working Methodology for the Establishment of Working Groups
- Establishment of the First Official IFIC LatAm Working Group on Integrated Care and End of Life
- The Establishment of New IFIC LatAm Working Groups is Underway

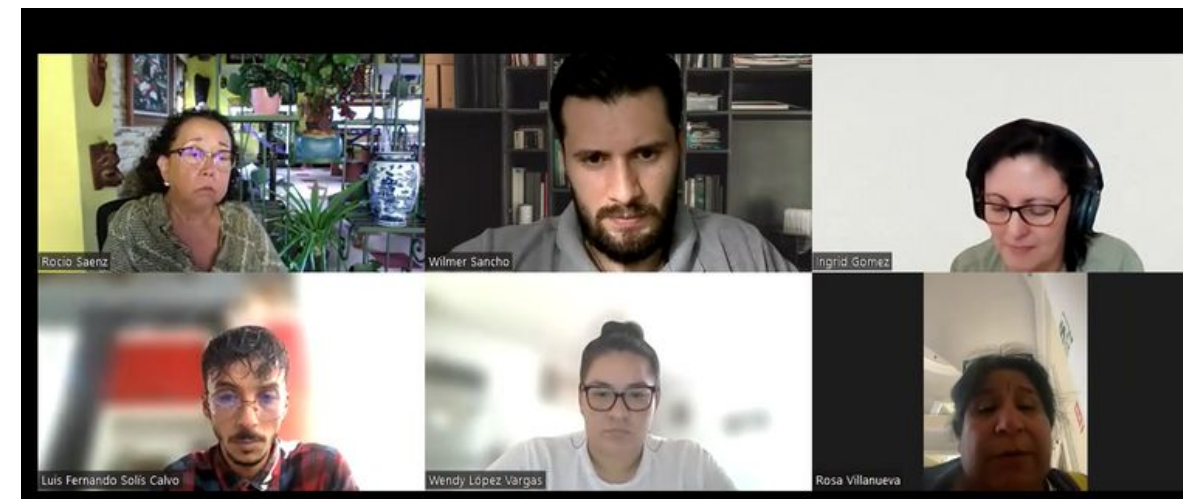
Integrated Care and End of Life



Comprehensive Care for Older Adults



Local Experiences of Integrated Care in Peru



Competencies for Training in Integrated Care



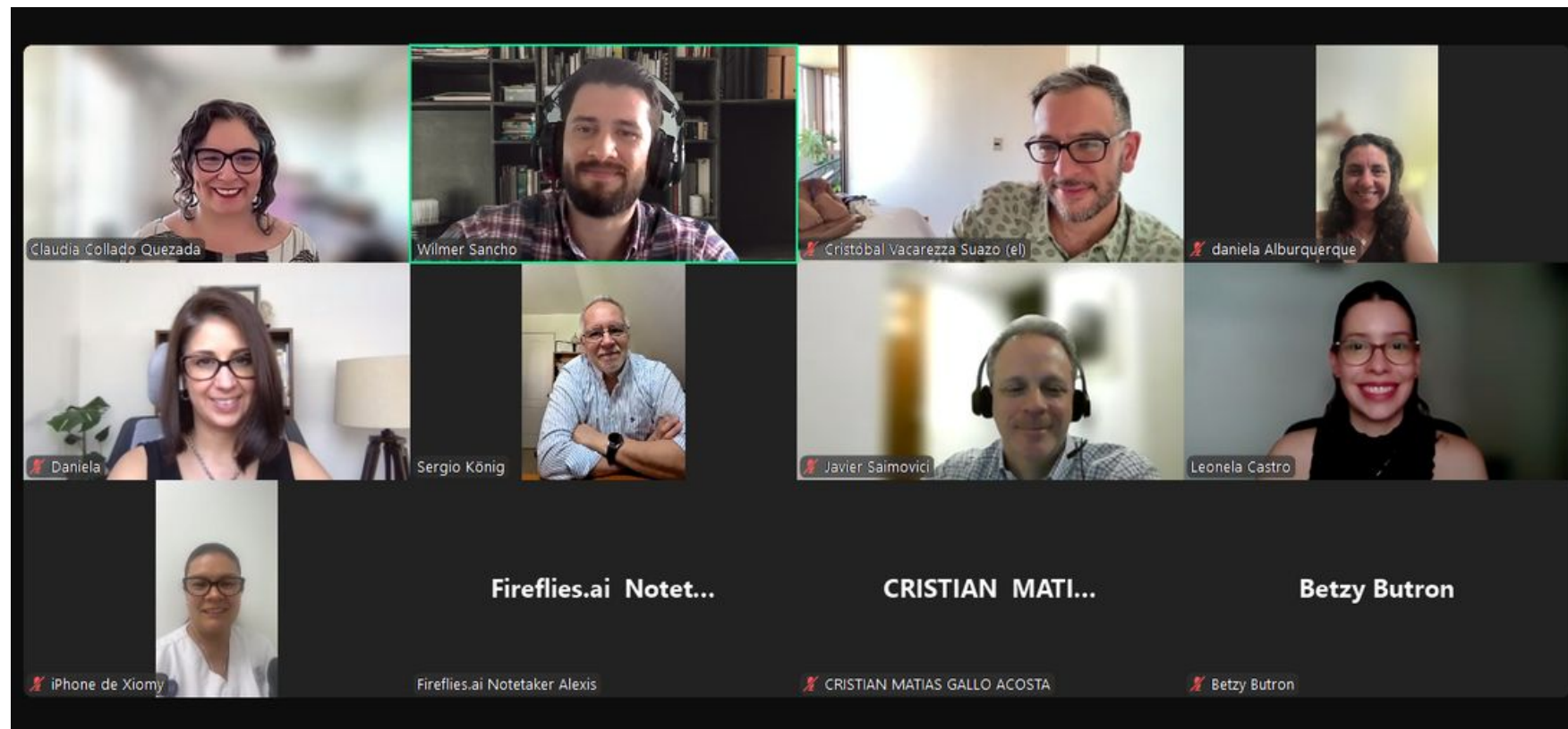
Implications



This initiative has enabled the development of a strategy for the establishment of working groups that unifies Latin American efforts to advance the positioning of integrated, people-, family-, and community-centered care within the complexity of the LatAm region



It is positioned as a strategy for the establishment of working groups that can be replicated by other entities to foster the participation of professionals, work teams, or regional groups in the field of integrated care



Session of the Integrated Care and End of Life Working Group with Participants from Various Countries in the Region, January 2025



Open Table Philosophy: Establishment of the Integrated and End-of-Life Care Working Group in the Latin American Region

Authors: Sáenz-Madriral, Rocío; Collado Claudia; Pinto, Paula; Vacarezza, Cristóbal; Gómez Duarte, Ingrid; Sancho-Rojas, Wilmer; Quesada-Chaves, Jossel; López, Wendy; Solis, Luis Fernando

IFIC LatAm

Speaker: Wilmer Sancho

ificalatam@integratedcarefoundation.org

