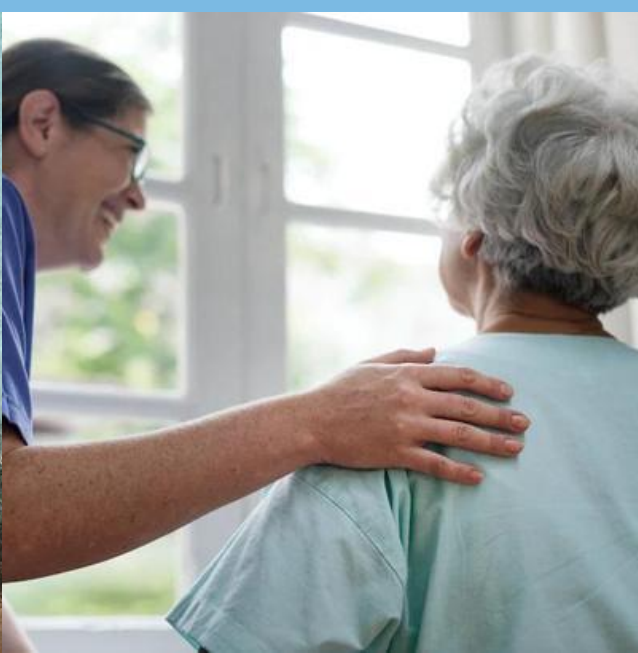


SCIROCCO: Health System Conditions for Scaling Integrated Care in Latin American Contexts

Authors: Gómez- Duarte Ingrid; Sáenz-Madrugal Rocío, Sancho-Rojas Wilmer,
Quesada-Chaves, Jossel

ificlatam@integratedcarefoundation.org



Background

- 01 Latin American healthcare systems: segmented and fragmented
- 02 Result of political, economic and socio-cultural processes
- 03 Reflect development models, ideological paradigms and organizational arrangements

Health care services:

- Person-centered
- With a complex adaptive social approach
- Plurinational and territorial

↓
SCIROCC



Analyze the preconditions for organizational maturity in local contexts in the region.

Approach

Organizational
maturity
characterization
using SCIROCCO

Identification of
convergences and
divergences
between countries

Proposed guidelines
to advance
integrated care

Results

Formation and preparation of research teams in:

- Bolivia
- Chile
- Colombia
- Costa Rica
- México

Support and accompaniment by the Pan American Health Organization (PAHO).



Implications

Extensive equipment preparation

Discussion to understand local health systems

Inclusion of contextual complexity in the field work.

Planned implementation:
2025-2026



SCIROCCO: Health System Conditions for Scaling Integrated Care in Latin American Contexts

Authors: Gómez- Duarte Ingrid; Sáenz-Madrugal Rocío, Sancho-Rojas Wilmer,
Quesada-Chaves, Jossel

ificlatam@integratedcarefoundation.org

